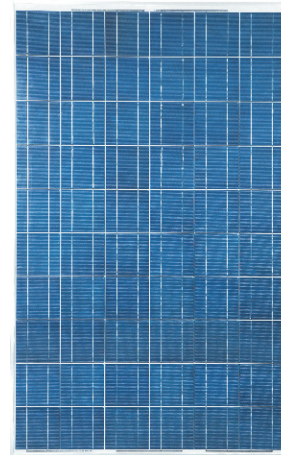




## CS6P-170/180/190

### E-MODULE

CS6P e-Module series is specifically designed for both on-grid and off-grid solar power plants, as well as for commercial and residential roof-top solar power systems.



### KEY FEATURES

---

- 60 polycrystalline solar cells
- Unique frame design to reinforce sealing and to prevent freezing and warping
- Strong aluminum frames to strengthen the load hold and to stand against high wind
- Special mounting holes on the frames for long and short side mounting
- High transparency low iron tempered glass with enhanced stiffness and impact resistance
- Advanced EVA encapsulation system with multilayer backsheets to better protect modules

### APPLICATIONS

---

- Large on and off-grid solar power stations
- Commercial / industrial building roof-top systems
- Residential roof-top systems
- Other industrial and commercial applications

### CERTIFICATIONS

---

#### Module Certificates

- ETL (UL 1703 standards)



#### Factory Certificates

- ISO 9001:2000, ISO/TS 16949:2002,
- QC 080000



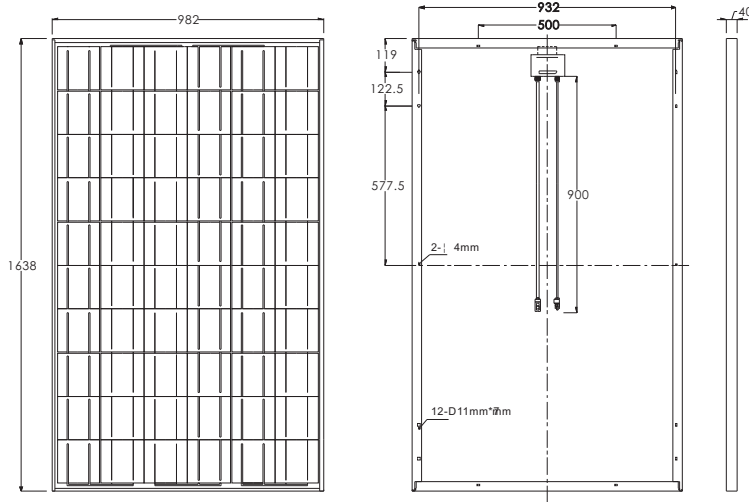
### LIMITED WARRANTY

---

- 25 years limited warranty on power output  
90% power output assurance for 10 years, and 80% power output assurance for 25 years .  
Please refer to warranty statement for warranty conditions in detail.

# CS6P-170/180/190 E-MODULE

## Mechanical Specifications



Dimensions		
Length*Width*Depth	mm (in)	1638 x 982 x 40 (64.5 x 38.7 x 1.6)
Weight	kg (lbs)	18.5 (40.8)

Cells	
Cell Material	Polycrystalline
Number of Cells	60

## Electrical Characteristics

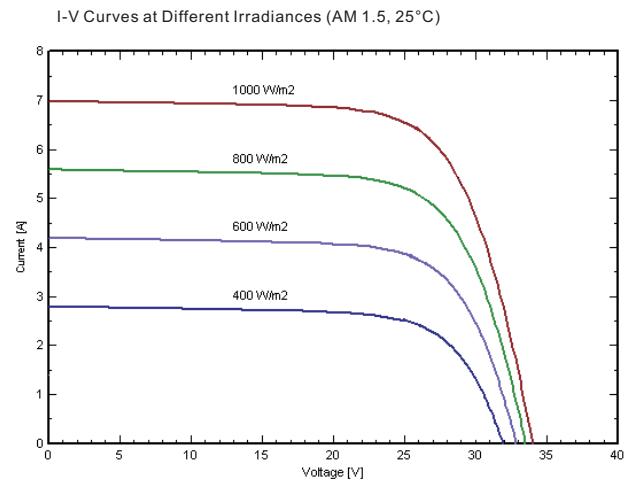
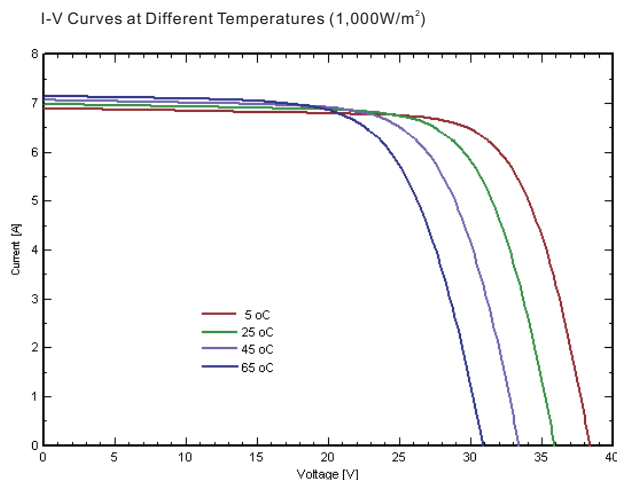
### Electrical Performance

Under Standard Test Conditions (STC) of irradiance of 1000W/m<sup>2</sup>, spectrum AM 1.5 and cell temperature of 25°C

		CS6P-170	CS6P-180	CS6P-190
Maximum Power	P <sub>max</sub>	170W	180W	190W
Voltage at Maximum Power	V <sub>mp</sub>	28.7V	28.7V	28.8V
Current at Maximum Power	I <sub>mp</sub>	5.93A	6.26A	6.60A
Open Circuit Voltage	V <sub>oc</sub>	35.8V	35.9V	36.0V
Short Circuit Current	I <sub>sc</sub>	6.62A	6.98A	7.33A
Maximum System Voltage		1,000V		
Temperature Coefficient	Voltage (V <sub>oc</sub> )	-0.35 %/°C		
	Current (I <sub>sc</sub> )	0.060 %/°C		

\*NOCT (Normal Operating Cell Temperature): 45°C

\*\*Module power tolerance: ±5W (approx. ±2.5%)



\*Specifications included in this datasheet are subject to change without prior notice.



**Corporate Headquarters**  
675 Cochrane Drive, East Tower 6th Floor  
Markham, ON, Canada L3R 0B8  
Tel: (905) 530-2334 / Fax: (905) 530-2001  
E-mail: inquire@csisolar.com

Web: www.csisolar.com

**Canadian Solar Inc. (Europe)**  
Mozartstrasse 1 Babenhausen  
Germany 87727  
Tel: +49(0)8333-92328 / Fax: +49(0)8333-92328-11  
E-mail: inquire-europe@csisolar.com